

SLOUGH MULTIFUEL EXTENSION PROJECT

Planning Inspectorate Ref: EN010129

The Slough Multifuel Extension Order

Land at 342 Edinburgh Avenue, Slough Trading Estate, Slough

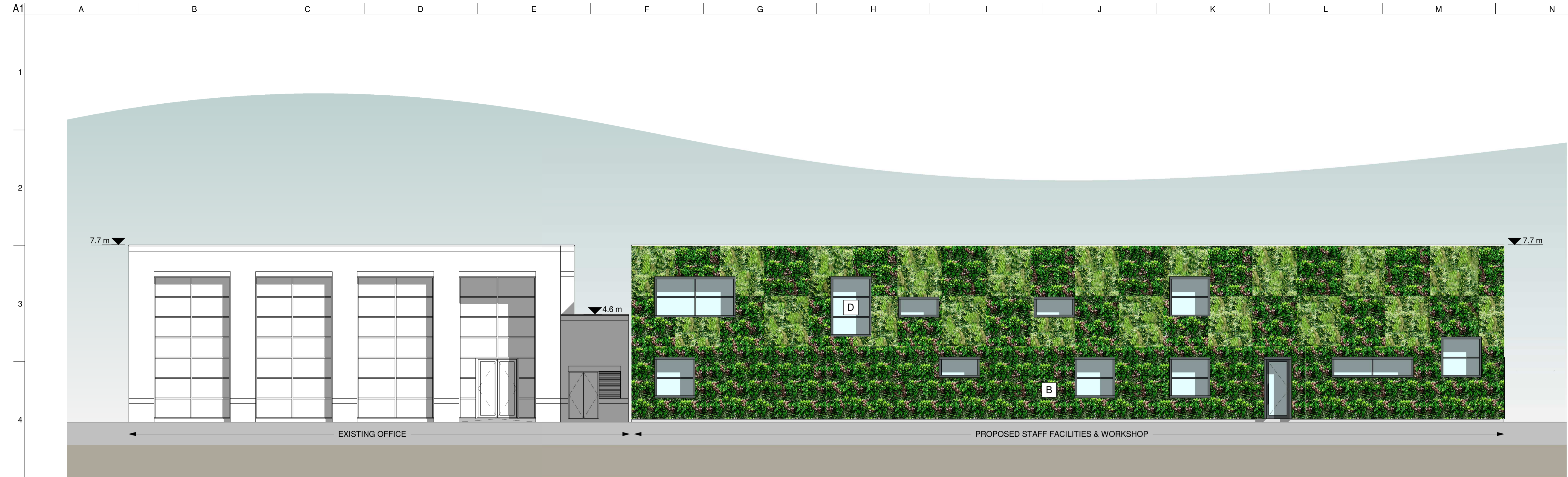
Document Ref: 7.4.6 Condition 4 - Living Wall - Staff Facilities & Workshop Elevations

The Planning Act 2008



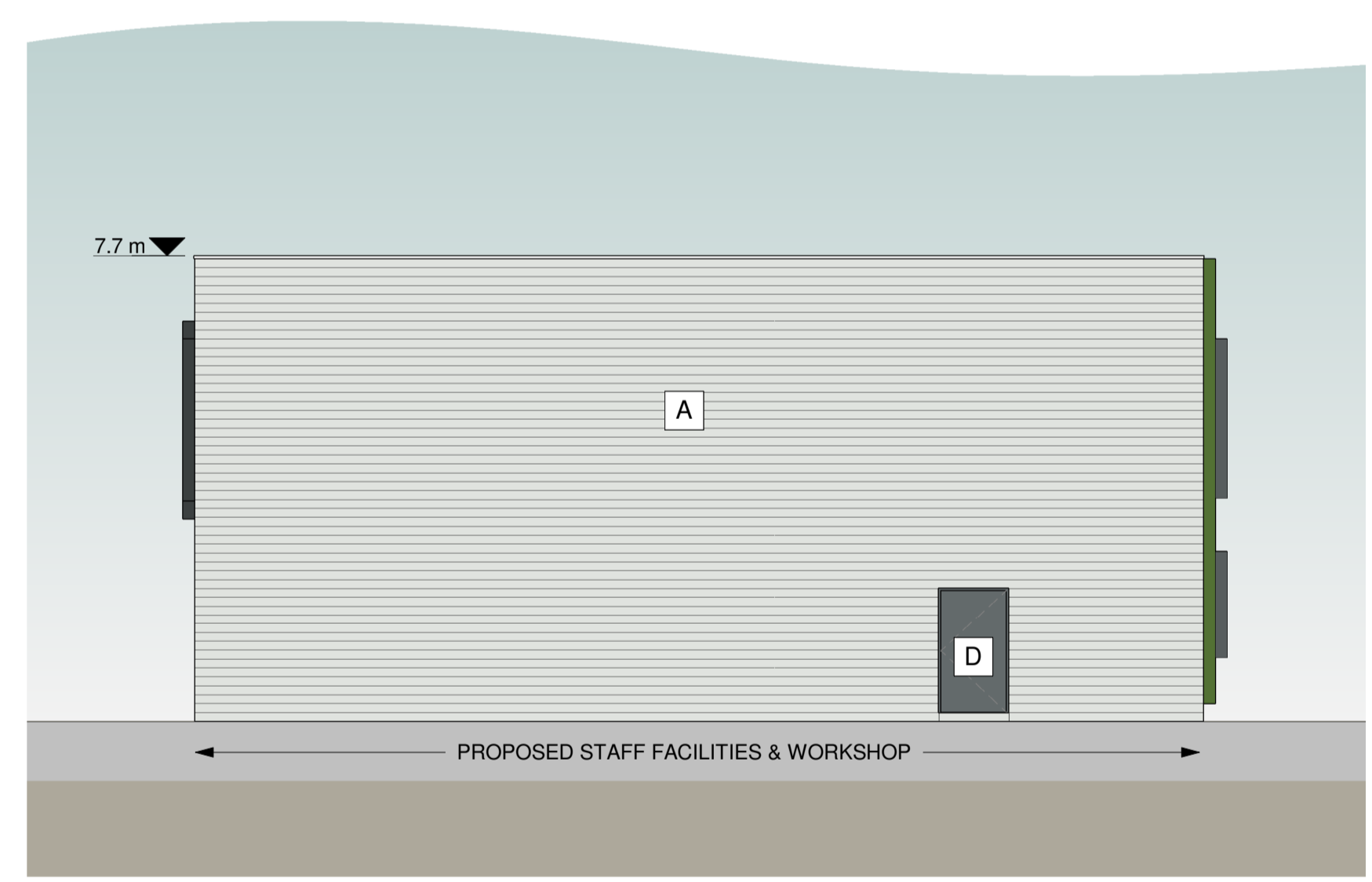
Applicant: SSE Slough Multifuel Limited

May 2023 – Deadline 5



NORTH ELEVATION

1 : 100



EAST ELEVATION

1 : 100

- A WALL CLADDING - TYPE A**
Material : Euroclad Elite System 55 Reverse Profile Steel Cladding Spanning Horizontally
Finish : TATA Colourcoat Prisma
Colour : Oyster (RAL 7035)
- B GREEN WALL - TYPE B**
 ANS Group Global Modular Living Wall System or similar.
Main planting mix: - Euonymus fortune 'Dart's Blanket'
 - Hedera Helix 'Wonder'
 - Lonicera Nitida 'Maigrun'
 - Phyllitis Scolopendrium
 - Vinca Minor 'Gertrude Jekyll'
Feature Planting: - Erysimum 'Bowles's Mauve'
 - Vinca Minor 'Bowles Blue'
 Planting mix is shown as illustrative and is subject to availability and further discussion with appointed living wall supplier

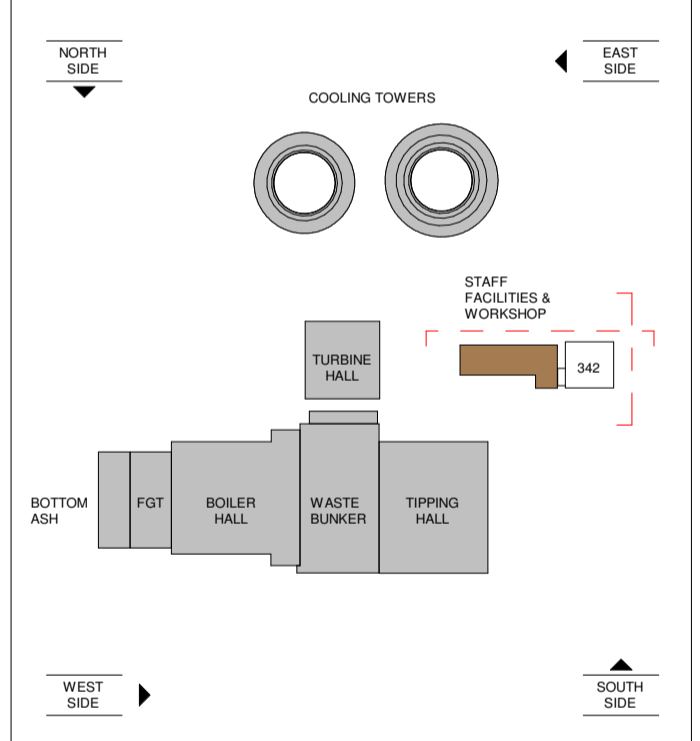
- C DOORS - TYPE C**
Material : Steel Faced Roller Shutter Door
Finish : Polyester Powder Coated (PPC)
Colour : To Match Surrounding Cladding
- D ADMIN BLOCK WINDOWS & DOORS - TYPE D**
Material : Schueco Aluminium Double Glazed Window System
Finish : Polyester Powder Coated (PPC) 30% Gloss
Colour : Slate Grey (RAL 7012)

COLOUR CHART

RAL 7035
Oyster

RAL 7012
Slate Grey

Copyright of this drawing is vested in the Architect and it must not be copied or reproduced without consent. Figured dimensions only are to be taken from this drawing. All contractors must visit the site and be responsible for taking and checking all dimensions relative to their work. Weedon Architects to be advised of any variation between drawings and site conditions. Refer and print in colour as required. IF IN DOUBT ASK DO NOT SCALE OFF THIS DRAWING



0.000m = +32.300m (Assumed)

WEEDON architects
 Henry's Yard
 176-178 Newhall St
 Birmingham B3 1SJ
 T: 0121 454 4171
 F: 0121 455 9192
 www.weedonarchitects.co.uk

Discipline Architectural Job No 16136

Doc. No. FMFEL
VAA-WA-50081040_0.0
 Staff Facilities & Workshop Elevations

0.0	21/11/19	SKM	AMG	PJC	ISSUED FOR PLANNING	
Rev	Date	Drawn	Modified	Checked	Approved	Modification
General tolerances					Legend Part List	
DIN ISO 2768 - mK					HZI = Supplied by Hitachi Zosen AG	
DIN 1583 - 1					SP = Spare Part	
EN ISO 1392 - BF					WP = Wear Part	
EN ISO 5817					PP = Purchased Part	
Suitability S1					Reservation of rights ISO 16016	
AIC 10AAF202					Copying of this document and give it to others and the use of communication of the content thereof are forbidden, without express authority. Offenders are liable to the payment of damages. All rights are reserved in the event of the grant of a patent or the registration of a utility model or design.	
Status Planning					Hitachi Zosen Inova AG	
Scale As indicated					Hitachi Zosen Inova AG	
Size A1					Hitachi Zosen Inova AG	
Project-Nr			Document No.		Revision	
P-3258			50081040		0.0	
Replaced by:			Replaced for:		Sht: 1 / 1	

